

# Prefab solutions Air Excellent in concrete



# Methods

- Prefab
  - MPV 140-160
  - Wide plate 70
  - Concrete 20
- Tunnel (on site)

## Proces example MPV floor (160mm)

- Bestcon MPV140 and MPV160 Solid Plate Floors
- The MPV140 and MPV160 : tight, wide foundation-free floors with various options for recesses and embeds
- Stamps not needed!





# Magnet



# Proces example MPV floor (160mm)

- Bestcon MPV140 and MPV160 Solid Plate Floors



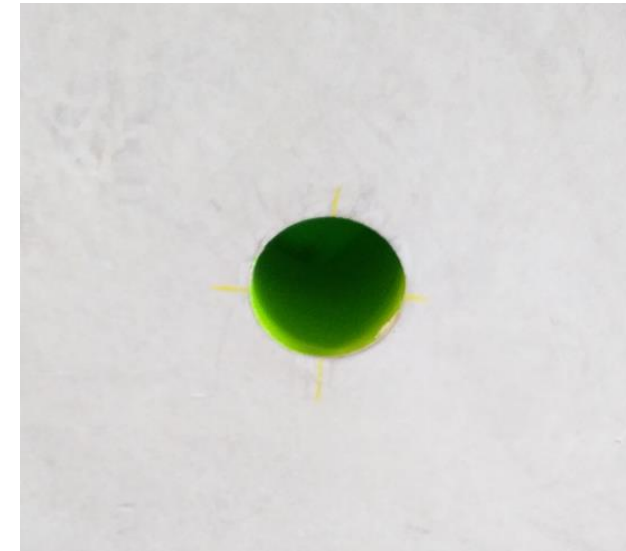
- Magnet  $\varnothing 125\text{mm}$
- Eccentric by turning nut



- Valve adapter(s) placed over magnet on metal floor plate

## Proces example MPV floor (160mm)

- Project 14 houses - Leiden
- Position of valves (exhaust) in ceiling kitchen.

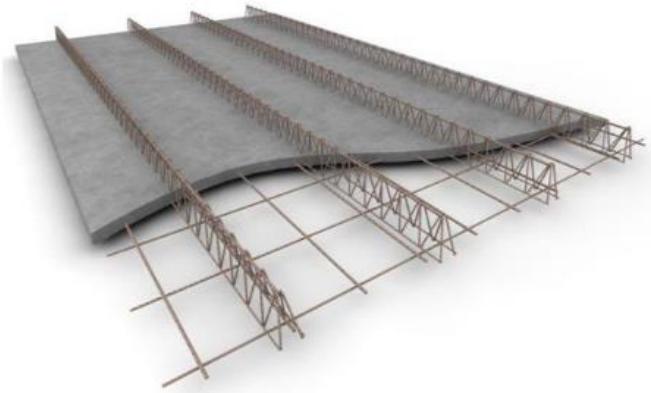


- Tight finishing edge



# Wide plate floor (breedplaatvloer)

- Apartments and houses
- Stamps needed





# Wide plate floor (breedplaatvloer)

- Production process





# Wide plate floor (breedplaatvloer)

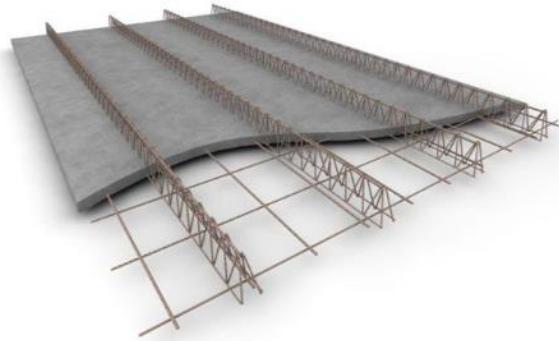
- Production process





# Wide plate floor (breedplaatvloer)

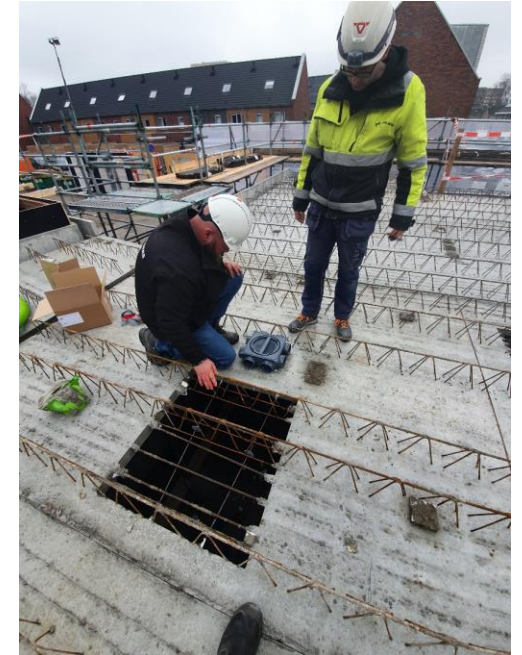
- Apartments and houses





# Wide plate floor (breedplaatvloer)

- Apartments and houses



- Air Distribution box on floorplate



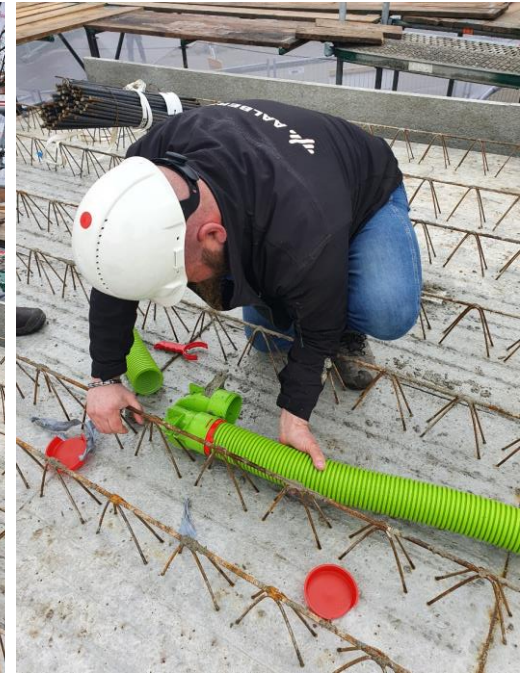
## Wide plate floor (breedplaatvloer)





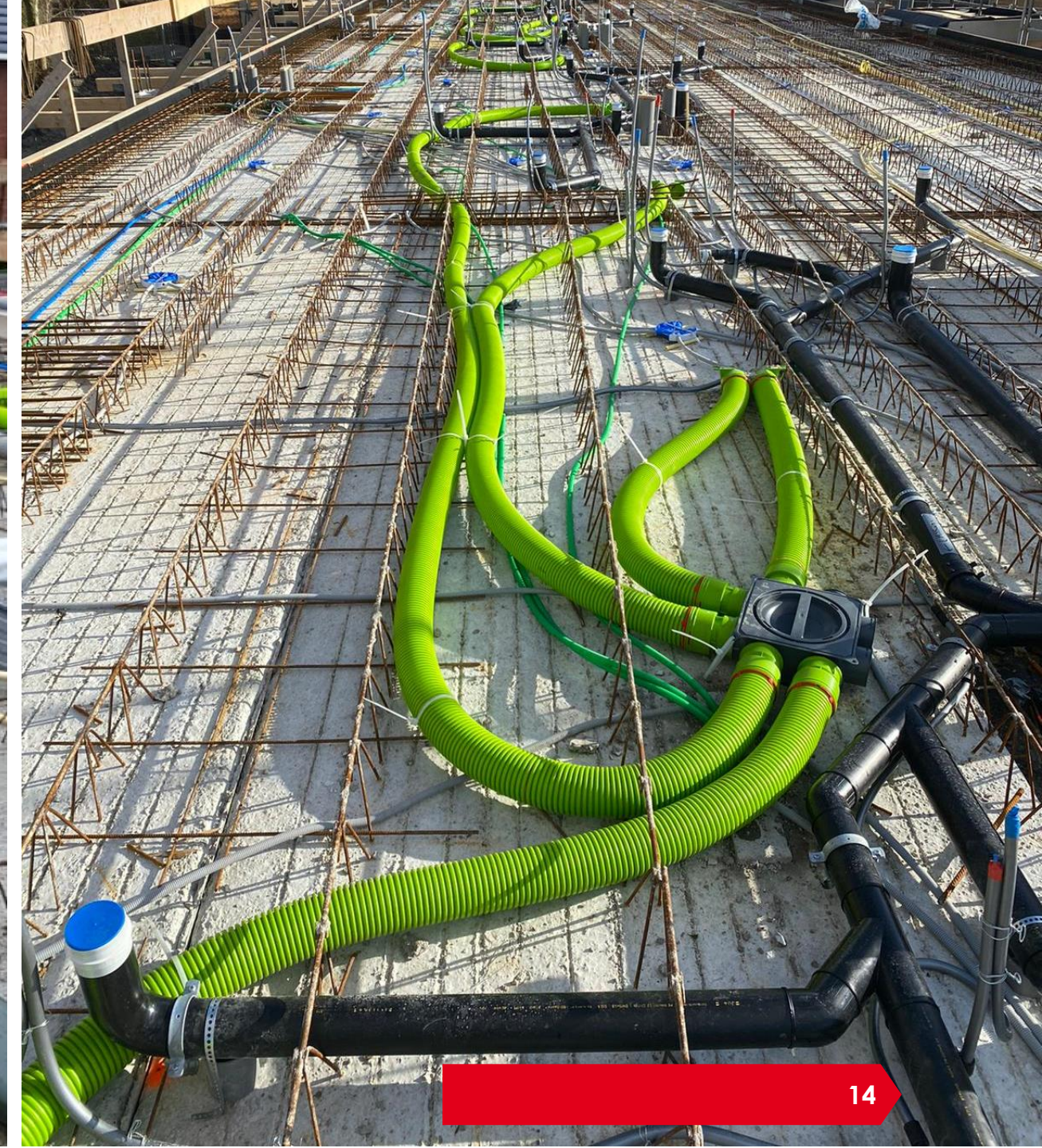
# Wide plate floor (breedplaatvloer)

- Apartments and houses



- Mounting Air Excellent

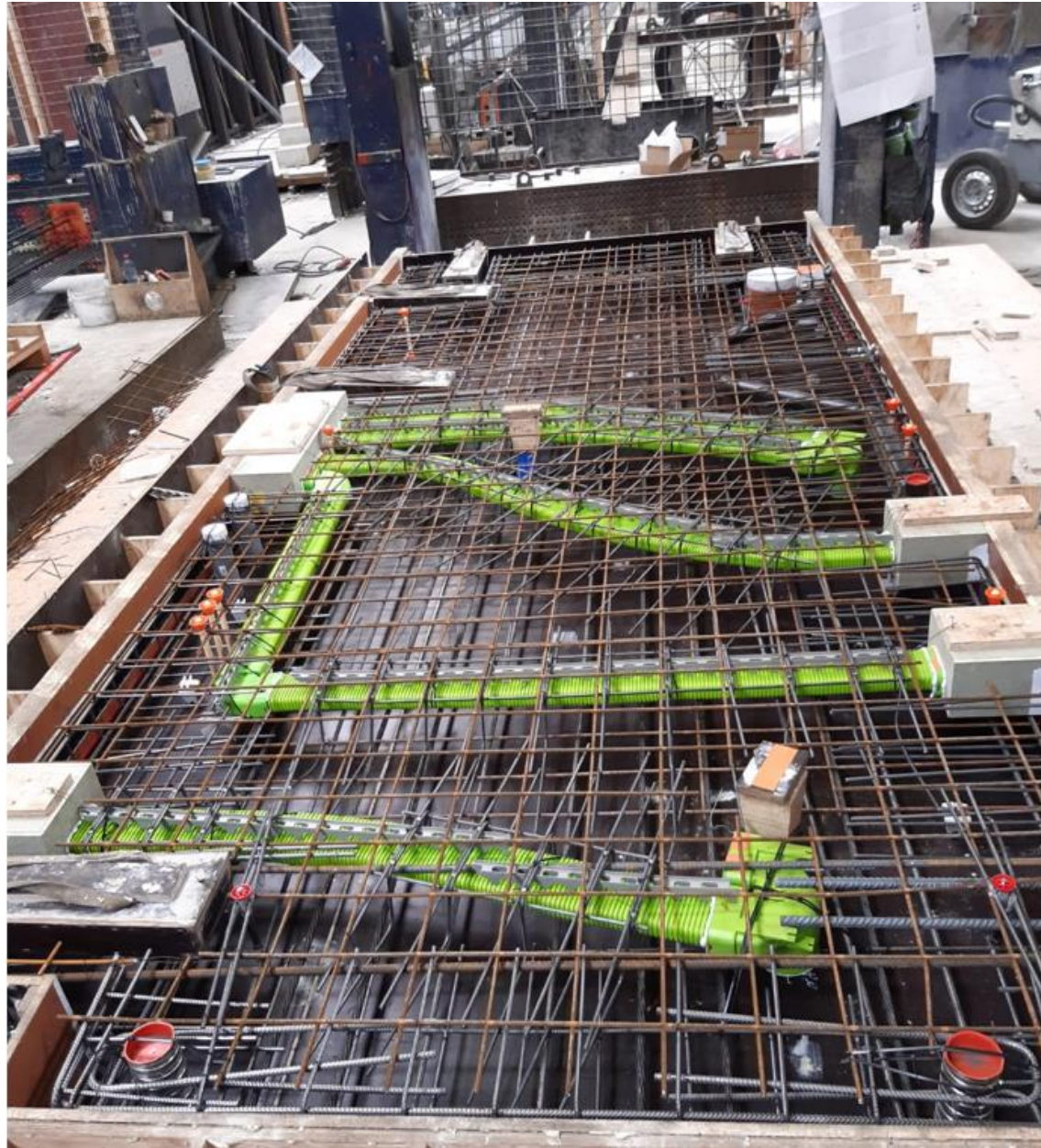






# Prefab Floor

- Apartments and houses





# Prefab Floor

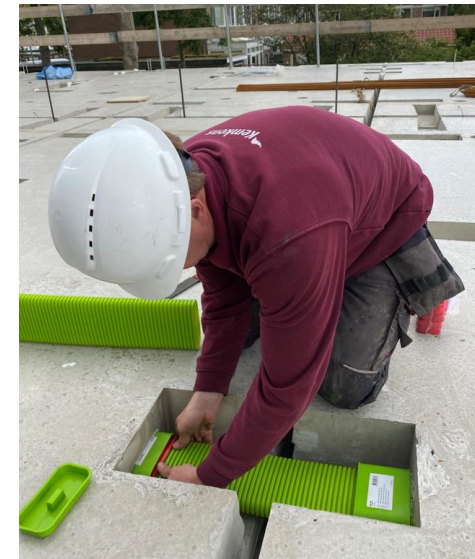
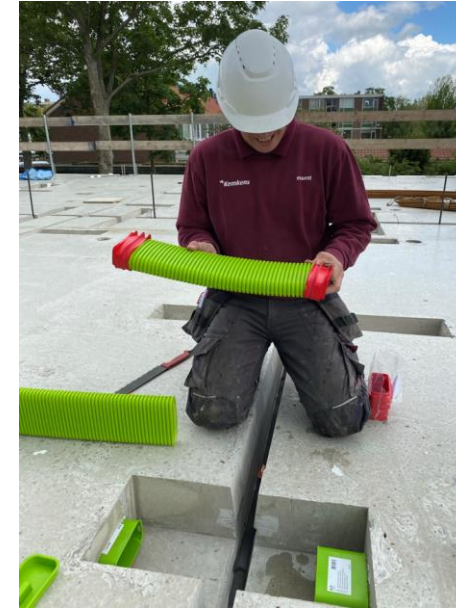
- Apartments and houses





# Prefab Floor

- Apartments and houses





# Prefab Floor

- Apartments and houses



- Opening to connect de mass flow adapter on the Air Distribution Box



# Tunnel Construction

- Apartments and houses





# Tunnel Construction

- Apartments and houses





# Tunnel Construction

- Apartments and houses







ubbink

Build smart.